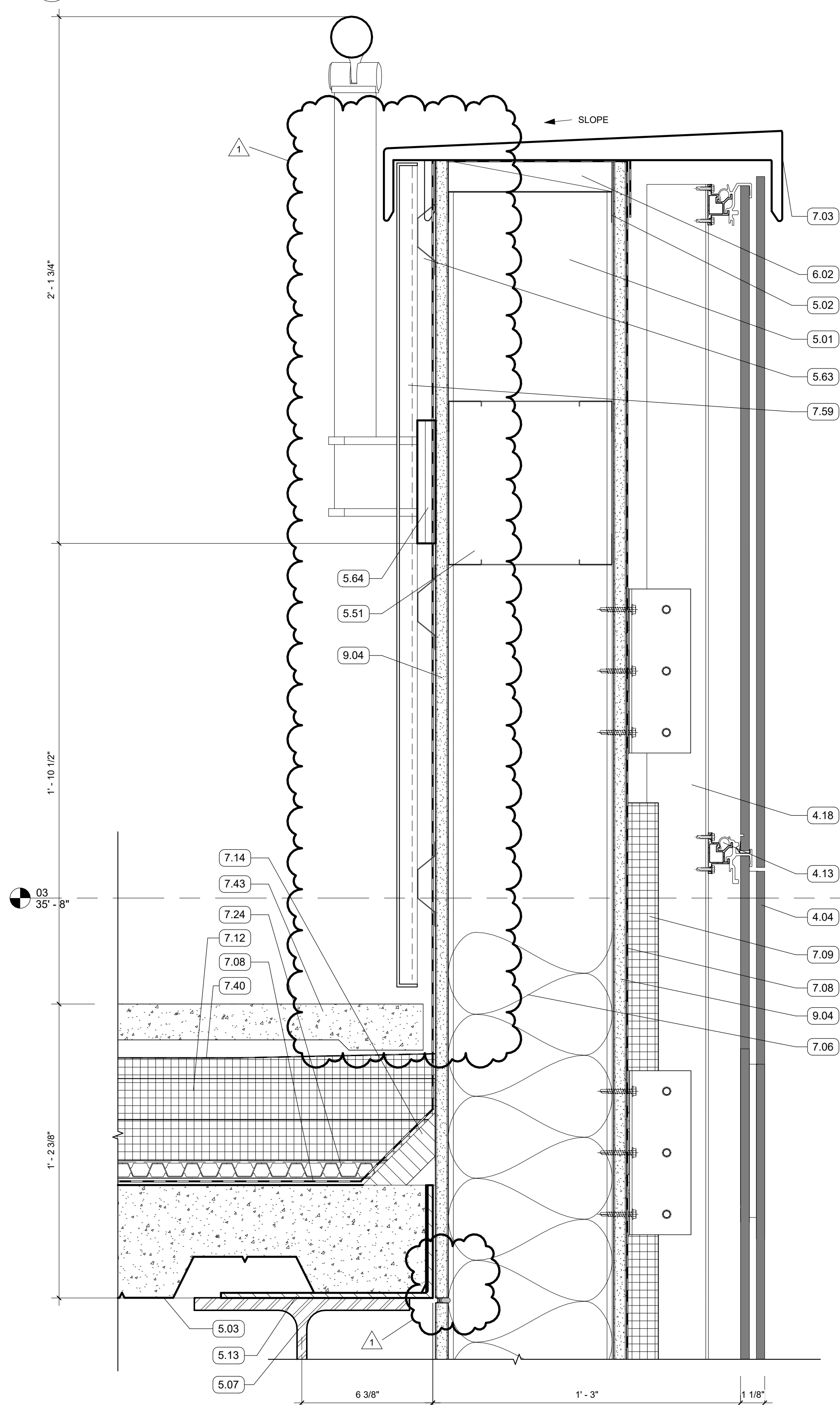
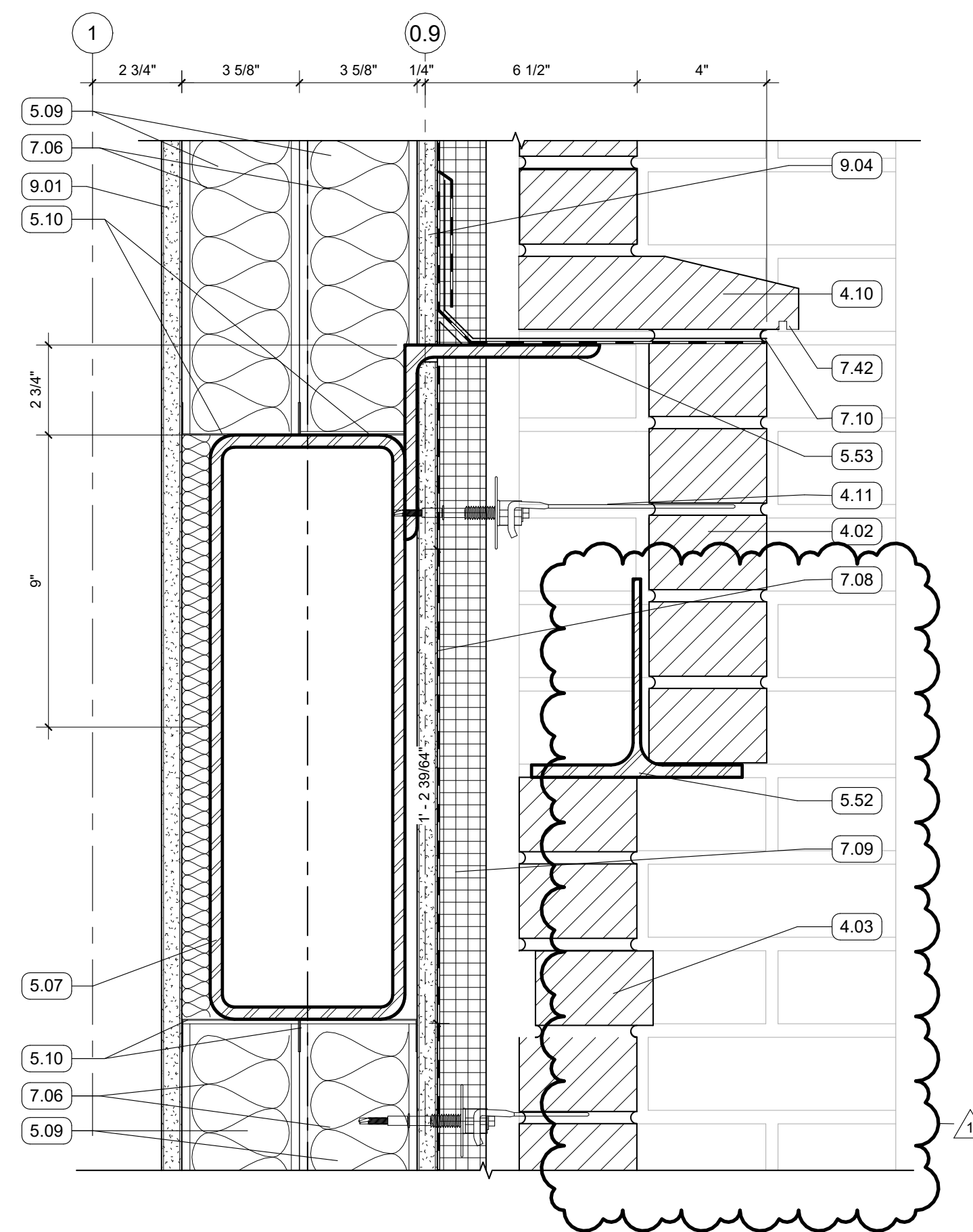


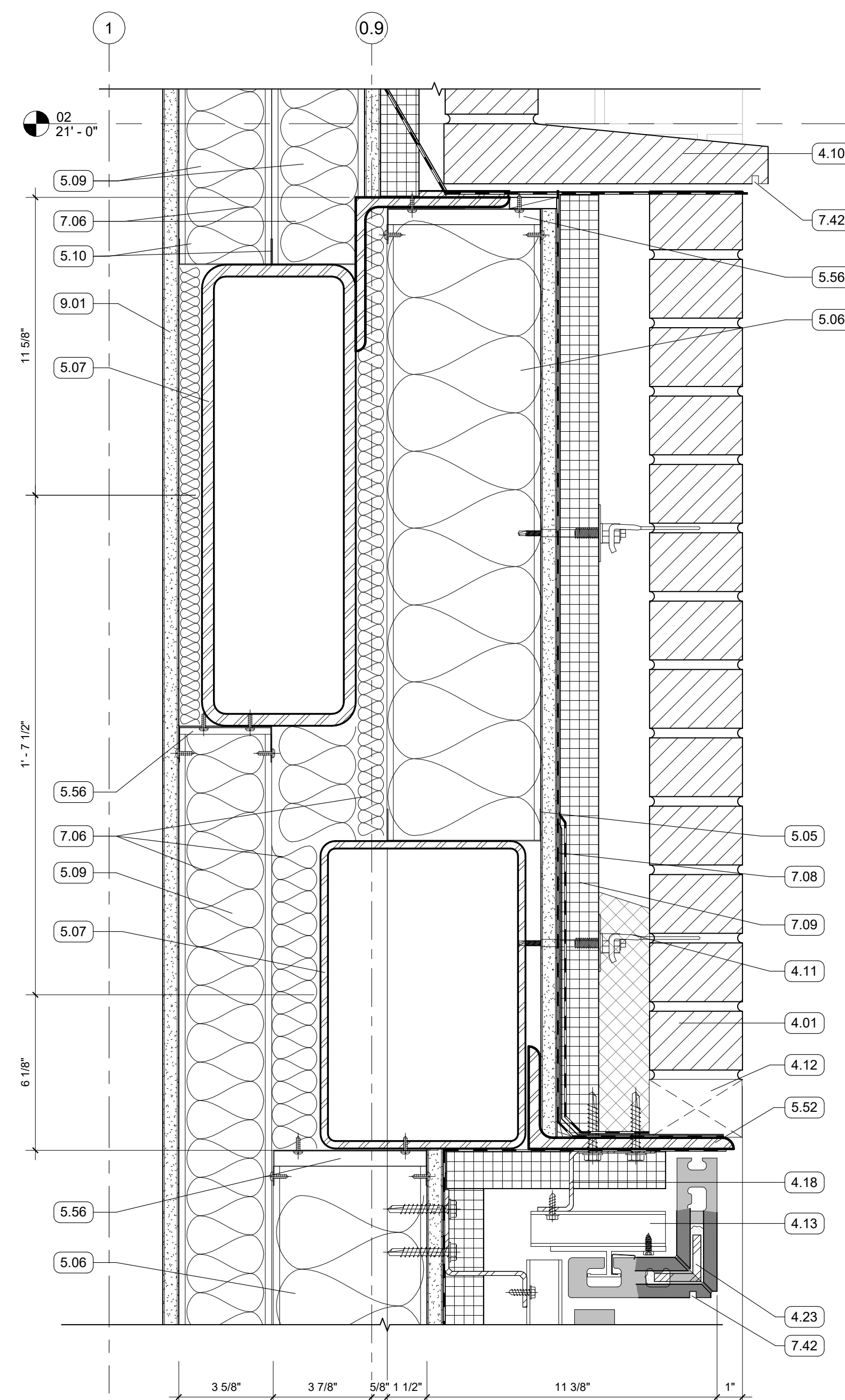
2 SECTION DETAIL - WEST STAIR SOFFIT TO STOREFRONT
3" = 1'-0" | RE:1/A356



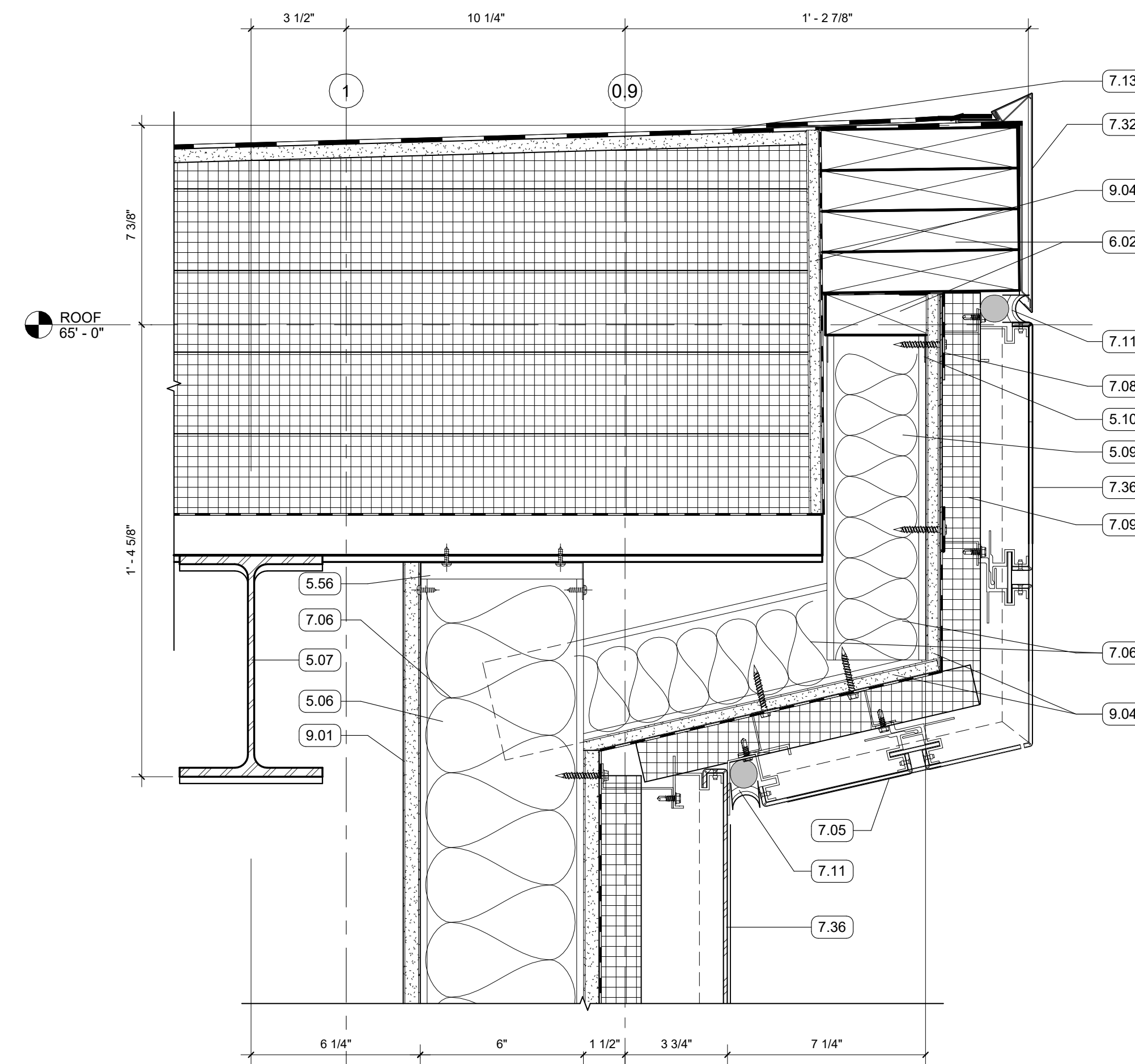
1 SECTION DETAIL - TERRA COTTA PARAPET
3" = 1'-0" | RE:3/A356



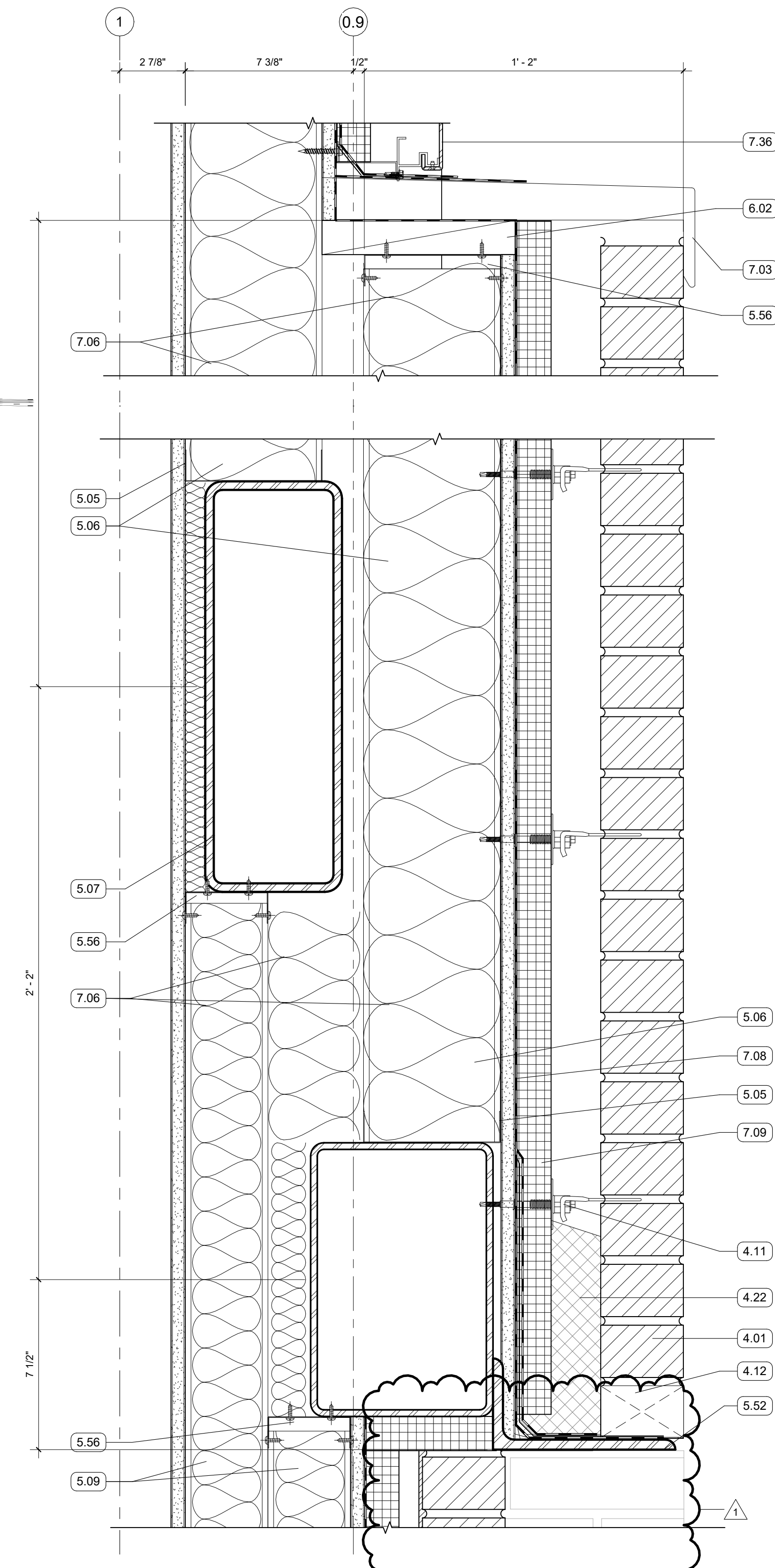
3 SECTION DETAIL - THIRD FLOOR MASONRY AT STAIR
3" = 1'-0" | RE:1/A356



4 SECTION DETAIL
3" = 1'-0" | RE:1/A356



6 SECTION DETAIL
3" = 1'-0" | RE:1/A356



5 SECTION DETAIL - MASONRY COPING TO METAL PANEL
3" = 1'-0" | RE:1/A356

GENERAL NOTES

1. ALL EXPOSED STRUCTURAL FRAMING & DECKING TO BE PAINTED

KEYNOTES

- 4.01 FACE BRICK VENEER, RUNNING BOND
- 4.02 4" RECESSED BRICK COURSE, RUNNING BOND, RECESS HORIZONTAL BANDS AN ADDITIONAL 1/2"
- 4.03 6" RECESSED BRICK COURSE, STACK BOND, PROJECT EVERY 3RD COURSE 1/2"
- 4.04 TERRA COTTA RAINSCREEN - STACK BOND, UNIT SIZE #1
- 4.08 PLASTER SOFFIT SYSTEM ON MTL. FRAMING - ALTERNATE NO. 2 REPLACES PLASTER SYSTEM WITH TERRA COTTA LARGE FORMAT SOFFIT PANELS
- 4.10 FACE BRICK, SPECIAL SHAPE SILL
- 4.11 MASONRY ANCHORS
- 4.12 WEEP VENTS AT 24" O.C. MIN
- 4.13 NON-CONTINUOUS ALUMINUM SUBSTRUCTURE
- 4.18 CONTINUOUS ALUMINUM SUBSTRUCTURE
- 4.22 MORTAR NET
- 4.23 BONDED CORNER
- 5.01 6" METAL STUD FRAMING
- 5.02 6" METAL STUD TRACK
- 5.03 5 1/2" COMPOSITE MTL DECK AND CONCRETE SLAB
- 5.05 6" METAL TRACK
- 5.06 6" METAL STUD FRAMING
- 5.07 STRUCTURAL STEEL FRAMING
- 5.09 3 5/8" METAL STUD FRAMING
- 5.10 3 5/8" METAL TRACK
- 5.13 EDGE ANGLE
- 5.51 BOX BEAM
- 5.52 GALVANIZED LOOSE INTEL - PAINT TO MATCH BRICK WHERE EXPOSED
- 5.53 SHELF ANGLE - RE: STRUCTURAL
- 5.56 DEFLECTION TRACK
- 5.63 7/8" HAT CHANNEL
- 5.64 STAINLESS STEEL DECORATIVE METAL RAILING
- 6.02 WOOD BLOCKING
- 7.03 PREFINISHED COPING FLASHING
- 7.05 MCM PANEL SOFFIT
- 7.06 BATT INSULATION, SIZED TO MATCH STUD DEPTH
- 7.08 PROTECTION COURSE
- 7.09 MINERAL FIBER BOARD INSULATION
- 7.10 THRU-WALL FLASHING, SLOPED TO DRAIN
- 7.11 BACKER ROD AND SEALANT
- 7.12 2 1/2" POLYISO INSULATION
- 7.13 2 PLY SBS ROOFING SYSTEM
- 7.14 CANT STRIP
- 7.24 ROOF DRAINAGE MAT
- 7.32 GRAVEL STOP FASCIA
- 7.36 MCM PANEL
- 7.40 FILTER FABRIC
- 7.42 DRIP EDGE
- 7.43 PEDESTAL PAVER - SEE ROOF SYSTEM IN ALTERNATE NO. 1
- 7.59 PREFINISHED METAL PANEL
- 8.01 ALUM STOREFRONT, CURTAINWALL, OR WINDOW SYSTEM. SEE OPENING SCHEDULE
- 9.01 5/8" GYPSUM BOARD. SEE FINISH PLAN FOR FINISH MATERIAL
- 9.04 5/8" EXTERIOR SHEATHING